

The Sisters Series was inspired by Erin Adams' trips to visit Susanne Kibak Redfield at her beautiful home in Sisters, Oregon. The tiles are simple yet colorful and a celebration of Susanne's fine craftsmanship. The marriage of handmade artisan work with playful, fun colors is designed to allow endless modulating patterns and original textural designs.

Product Usage and Further Information:

White Talc Tile Body

Product Features:

Designed for use on residential and commercial interiors.

Not for use on floors.

Manufactured in Sisters, Oregon, USA.

Description:

4 1/4" x 5"

9 pieces per square foot.

9/32" thick unless otherwise noted.

Rectified edge.

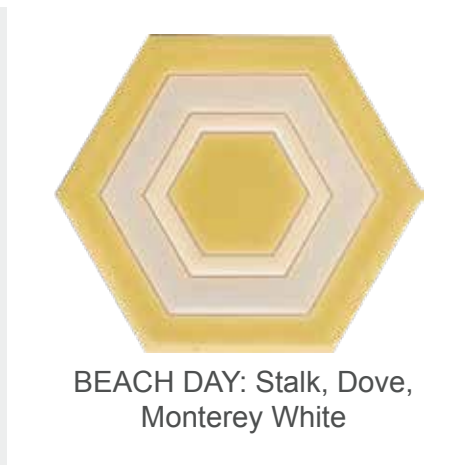
Trims: Options available, see page 9.

Trims can extend lead time.

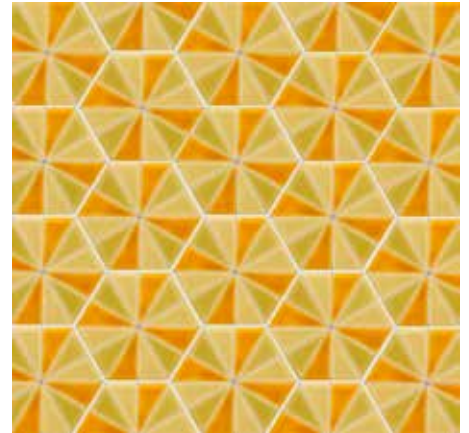
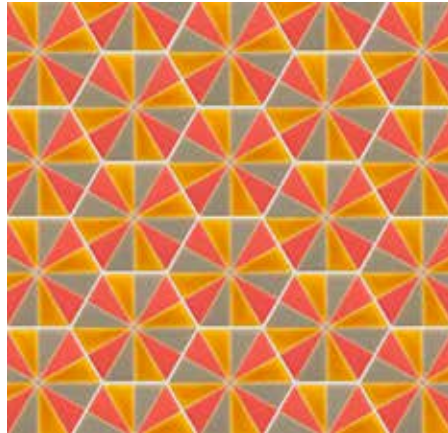
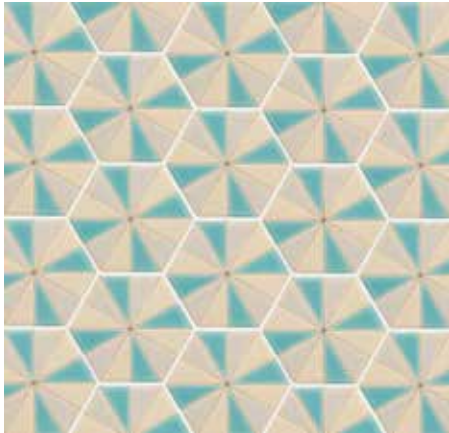
Field Tile options: Page 8.

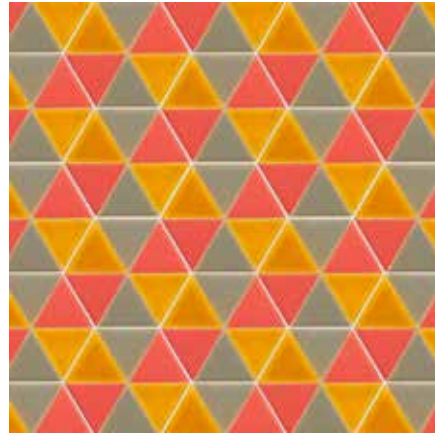
Typical lead time is 4-7 weeks, please call to verify.

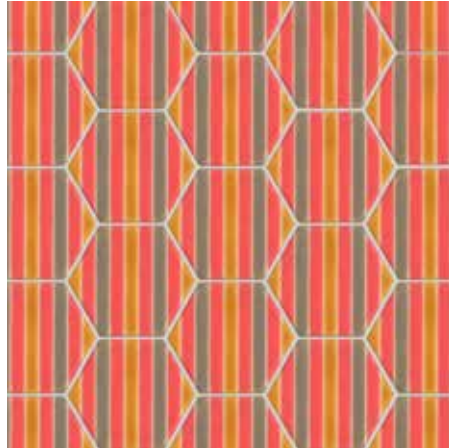


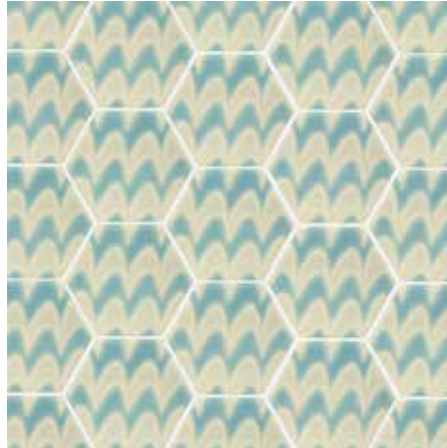












Tango Tile

SISTERS SERIES

Designed by Erin Adams

Made by KIBAK TILE

4 1/4" x 5" Hex Field Tiles are available in the following colors:

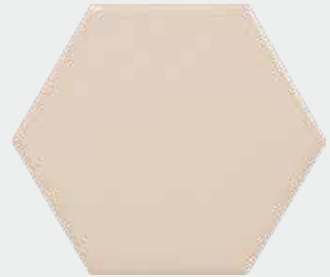
1 tile = 0.11 sq ft. Order 9 tiles for each sq ft needed. Sold by box.



White, gloss



Sebring, matte



Monterey White, gloss



Dove, gloss



Perennial, gloss



Cloud, gloss



Melon, matte



India, matte



Slate, gloss



Pebble, gloss



Horizon, gloss



Black, gloss

TRIMS & MOLDING

Beak 1" x 6"



Flat Liner 1/4" x 6"



Quarter Round 1" x 6"



Flat Liner 1/2" x 6"



Half Round 1/2" x 6"



Square Style V-Cap 2 1/4" x 6"



Chair Rail Molding 2" x 8"



Chair Rail Molding
Corner 2" x 2"



Hunt V-Cap 2" x 8"



Hunt V-Cap
Corner 2" x 2"

