



Created by award-winning designer Paul Schatz, the Encanto Collection is nothing like you've ever seen before in any medium. It takes inspiration from cultures around the globe and presents them in a fresh display of intricate patterns. We show all 9 of the patterns in 6 colorways, but all may be done in colors of your choosing.

Cement tiles are made by hand, one at a time, using mineral pigments, cement, a mold, and an hydraulic press. The metal mold is handmade following specific design drawings. The pigment composition is a mixture of high quality white Portland cement, marble powder, fine sand, and natural mineral color pigments.

The process is environmentally friendly using only natural materials and since they are not fired, little energy. Cement tiles are 100% recyclable and may earn your project LEED points.

As handmade products, they are expected to have slight imperfections which give them character and depth.

Lead Time: 8-10 weeks.



Alegra-03



Alegra-03: 4 Piece



Alegra-03: 16 Piece



Alegra-05



Alegra-05: 4 Piece



Alegra-05: 16 Piece



Alegra-08



Alegra-08: 4 Piece



Alegra-08: 16 Piece



Alegra-11



Alegra-11: 4 Piece



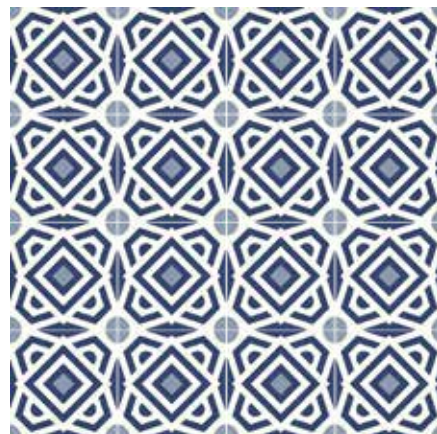
Alegra-11: 16 Piece



Alegra-12



Alegra-12: 4 Piece



Alegra-12: 16 Piece



Alegra-13



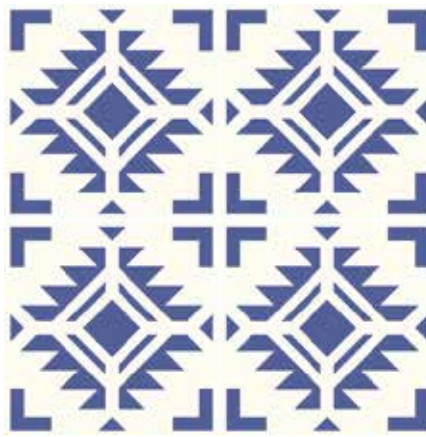
Alegra-13: 4 Piece



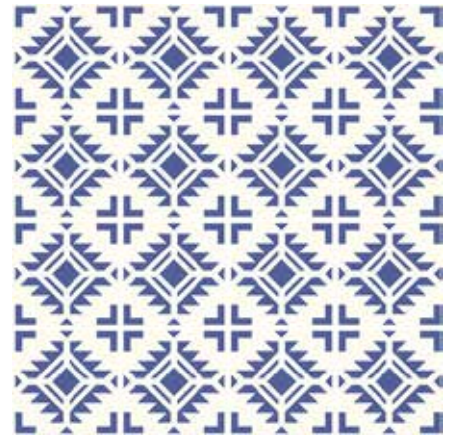
Alegra-13: 16 Piece



Calypsa 01



Calypsa 01: 4 Piece



Calypsa 01: 16 Piece



Calypsa 08



Calypsa 08: 4 Piece



Calypsa 08: 16 Piece



Calypsa 10



Calypsa 10: 4 Piece



Calypsa 10: 16 Piece



Calypsa 16



Calypsa 16: 4 Piece



Calypsa 16: 16 Piece



Calypsa 17



Calypsa 17: 4 Piece



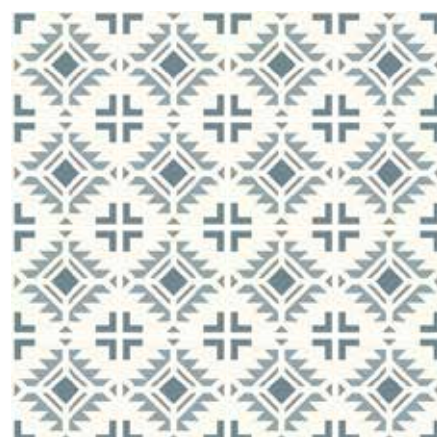
Calypsa 17: 16 Piece



Calypsa 18



Calypsa 18: 4 Piece



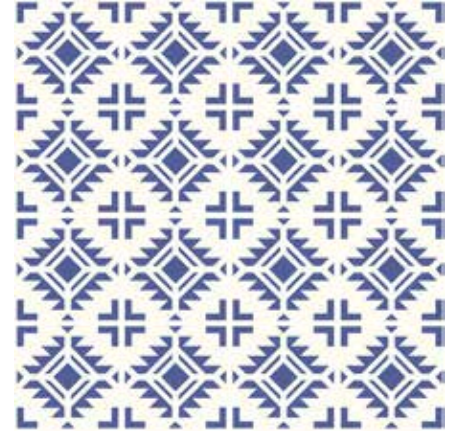
Calypsa 18: 16 Piece



Cean 02



Cean 02: 4 Piece



Cean 02: 16 Piece



Cean 04



Cean 04: 4 Piece



Cean 04: 16 Piece



Cean 07



Cean 07: 4 Piece



Cean 07: 16 Piece



Cean 10



Cean 10: 4 Piece



Cean 10: 16 Piece



Cean 15



Cean 15: 4 Piece



Cean 15: 16 Piece



Cean 17



Cean 17: 4 Piece



Cean 17: 16 Piece



Luciana 01



Luciana 01: 4 Piece



Luciana 01: 16 Piece



Luciana 07



Luciana 07: 4 Piece



Luciana 07: 16 Piece



Luciana 08



Luciana 08: 4 Piece



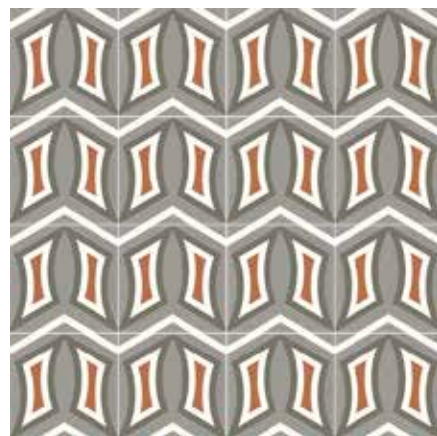
Luciana 08: 16 Piece



Luciana 12



Luciana 12: 4 Piece



Luciana 12: 16 Piece



Luciana 20



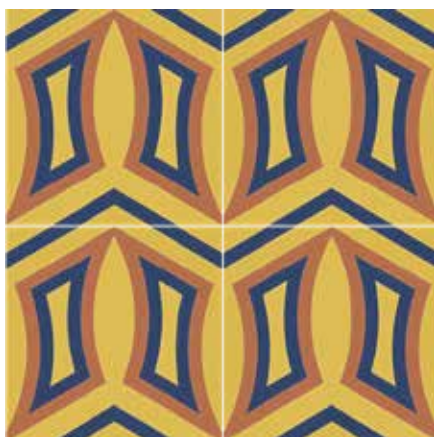
Luciana 20: 4 Piece



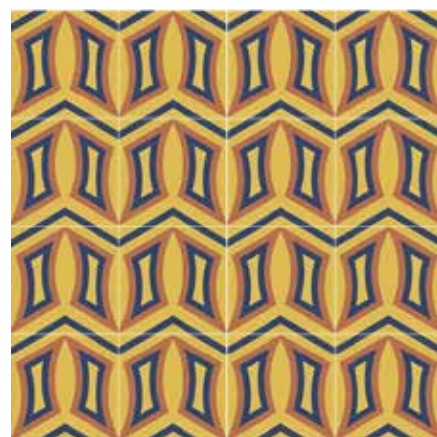
Luciana 20: 16 Piece



Luciana 24



Luciana 24: 4 Piece



Luciana 24: 16 Piece



Luisa 01



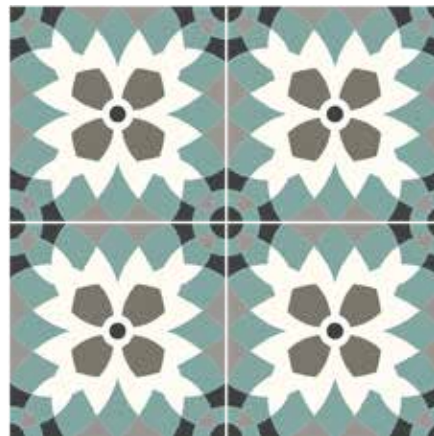
Luisa 01: 4 Piece



Luisa 01: 16 Piece



Luisa 06



Luisa 06: 4 Piece



Luisa 06: 16 Piece



Luisa 14



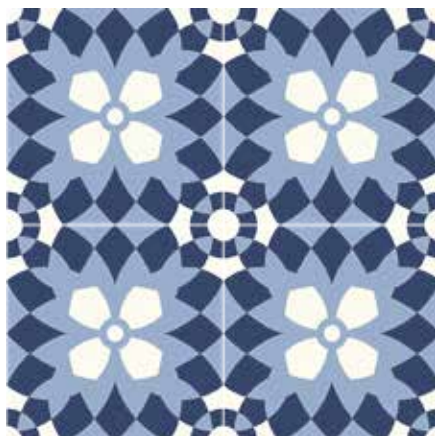
Luisa 14: 4 Piece



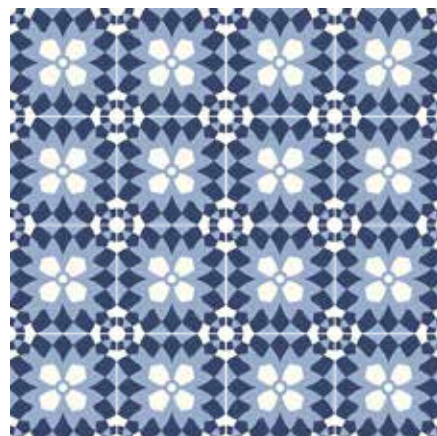
Luisa 14: 16 Piece



Luisa 15



Luisa 15: 4 Piece



Luisa 15: 16 Piece



Luisa 18



Luisa 18: 4 Piece



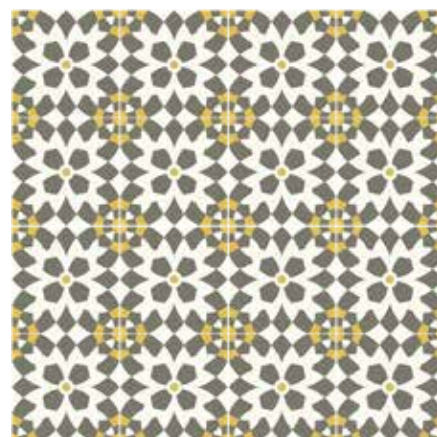
Luisa 18: 16 Piece



Luisa 20



Luisa 20: 4 Piece



Luisa 20: 16 Piece



Marci 01



Marci 01: 4 Piece



Marci 01: 16 Piece



Marci 04



Marci 04: 4 Piece



Marci 04: 16 Piece



Marci 07



Marci 07: 4 Piece



Marci 07: 16 Piece



Marci 10



Marci 10: 4 Piece



Marci 10: 16 Piece



Marci 20



Marci 20: 4 Piece



Marci 20: 16 Piece



Marci 24



Marci 24: 4 Piece



Marci 24: 16 Piece



Pasquale 02



Pasquale 02: 4 Piece



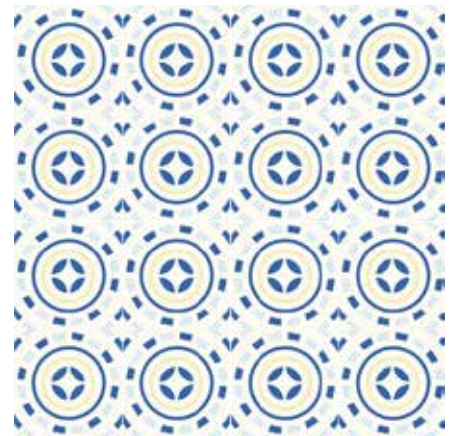
Pasquale 02: 16 Piece



Pasquale 04



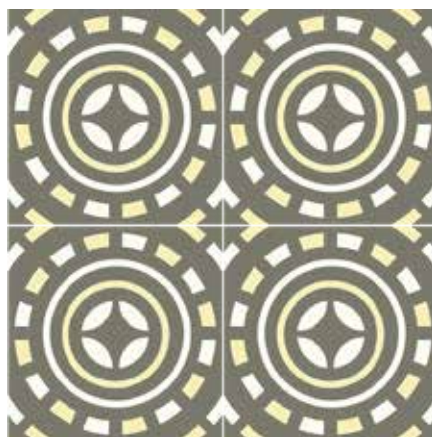
Pasquale 04: 4 Piece



Pasquale 04: 16 Piece



Pasquale 05



Pasquale 05: 4 Piece



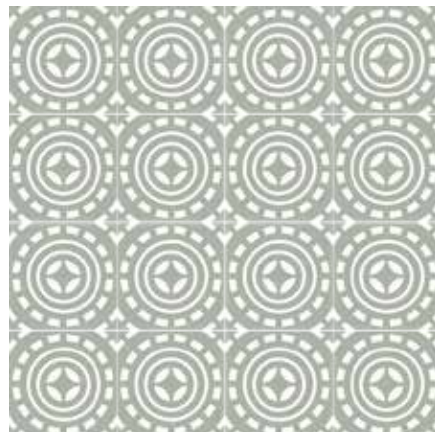
Pasquale 05: 16 Piece



Pasquale 17



Pasquale 17: 4 Piece



Pasquale 17: 16 Piece



Pasquale 19



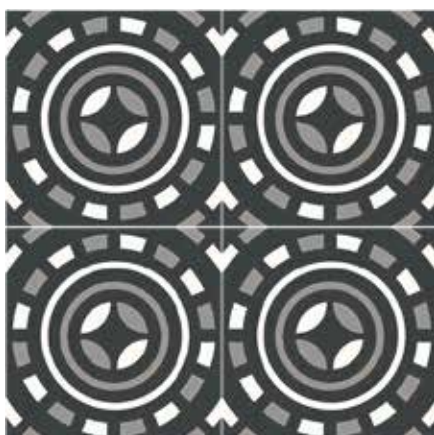
Pasquale 19: 4 Piece



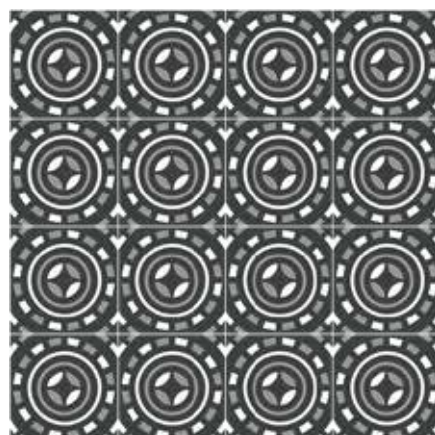
Pasquale 19: 16 Piece



Pasquale 27



Pasquale 27: 4 Piece



Pasquale 27: 16 Piece



Patrice 01



Patrice 01: 4 Piece



Patrice 01: 16 Piece



Patrice 02



Patrice 02: 4 Piece



Patrice 02: 16 Piece



Patrice 06



Patrice 06: 4 Piece



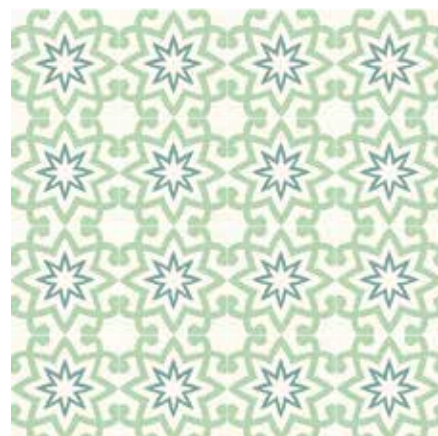
Patrice 06: 16 Piece



Patrice 08



Patrice 08: 4 Piece



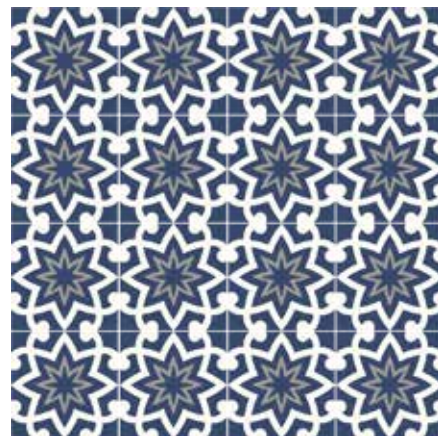
Patrice 08: 16 Piece



Patrice 11



Patrice 11: 4 Piece



Patrice 11: 16 Piece



Patrice 12



Patrice 12: 4 Piece



Patrice 12: 16 Piece



Yaneli 1



Yaneli 1: 4 Piece



Yaneli 1: 16 Piece



Yaneli 09



Yaneli 09: 4 Piece



Yaneli 09: 16 Piece



Yaneli 11



Yaneli 11: 4 Piece



Yaneli 11: 16 Piece



Yaneli 18



Yaneli 18: 4 Piece



Yaneli 18: 16 Piece



Yaneli 21



Yaneli 21: 4 Piece



Yaneli 21: 16 Piece



Yaneli 25



Yaneli 25: 4 Piece



Yaneli 25: 16 Piece

Cement Tiles might show variation in color and design and will not be identical piece to piece. This is a result of its handmade process and the nature of cement. We suggest mixing tiles from different boxes during setting to produce a beautiful and naturally rich appearance. Details could be noticed in a close-up, but will be invisible when installation is completed.

By following these recommendations your Cement Tiles will result in a beautiful, durable and easy to maintain surface that can be enjoyed for many years.

CARE AND INSPECTION

- 1) Inspect your order carefully. Tango Tile will not be responsible for any material that has been installed, installation of material means full acceptance.
- 2) Store material in a dry area and do not let boxes or tiles to get wet. Moisture or dampness might cause stains, color fades, cracking, pitting or efflorescence.
- 3) During installation and handling, be careful not to damage the finished surface, edges and corners of the tiles. Carry tiles face to face to avoid scratches.
- 4) Original Mission Tile as a cement-based product may have residues on the tile surface. Before starting the installation, it is highly recommended to use a clean cloth to remove any residues.

Installation

- 5) Original Mission Tile, as a product of cement and natural materials, is subjected to color and shade variations and it is highly recommended to mix tiles from the different boxes.
- 6) Installation must be made over a flat, level, stable and completely cured subfloor. Moisture, water evaporation or excess of water can cause stains, pitting, cracking and efflorescence to appear on the tile surface, this effect is a natural reaction of cement-based products.
 - 6.1) Isolation membrane is recommended to prevent cracking or fracturing from the movement of the subfloor, never installed tiles over uncured subfloors.
 - 6.2) Waterproof membrane is recommended in all wet areas to prevent leakage of water through to the subfloor or spaces below.
 - 6.3) Radiant heating systems can be used with Cement Tiles and it is recommended to use a membrane, concrete is a good heat conductor, be sure subfloor, mortar bed and tiles are completely dried to avoid efflorescence.
- 7) When installing we recommend to place the center tiles first, then the borders and finally the field tiles that will surround the pattern.
- 8) Use a high quality thin-set adhesive based in cement, such as a Laticrete or Mapei products. Contact adhesive manufacturer to recommend the appropriate product and Follow manufacturer's instructions. 3/8" mortar bed is recommended.

9) Make sure that adhesive is applied to the full back of each tile (100% coverage). It is recommended to apply the back buttering to get a better adherence.

10) Do not beat with a mallet or rubber hammer to set tiles, this might cause breakage or form thin cracks that will show up when applying the grout or sealer, perfectly level tiles using hand pressure only, Cement Tiles cannot be polished down. Remove excess adhesive from the surface with a damp cloth or sponge when it is still fresh to avoid any stains.

11) Cement Tiles can be cut using a sharp diamond blade in conjunction with water to avoid the chipping of edges.

12) Allow tiles and mortar bed to dry out completely before starting to seal and/or polish the tiles. Do not cover the tiles to allow breathing and evaporation. Do not step on tiles until mortar bed is dried.

13) For out-doors installations, a roof is highly recommended where Cement Tiles will be installed to avoid color fading caused by direct sunlight, tiles might also be polished with wax for extra protection and repel direct sunlight.

CLEANING

14) After installation, wash floor with a PH neutral detergent. Use a single disc floor machine with a white pad to remove any residues, remove excess dirt and water. Do not use any acids or alkaline to clean tiles.

15) Use a PH neutral cleaner and fine sandpaper to remove any stain or residues. Do not allow water or other liquids to spot, pond or ring on the surface tiles.

SEALING, GROUTING & WAXING

16) Treatments must be done after installation and when tiles are completely dry. It is highly recommended to make a test on a single piece to check the desired finish.

17) Cement Tiles are porous and not pre-sealed. Therefore, sealing with a penetrating sealer is necessary before grouting; we recommend Miracle, Stonetech, Fila and Drytreat sealers.

17.1) Apply 2 thin coats of a penetrating sealer and a final coat of a Topical sealer to create a protection film over the tile surface, allow it to dry completely, refer to manufacturer instructions. Use a dry absorbent white cloth, clean mop or a solvent resistant sprayer and remove all excess sealant from the tile surface.

17.2) For extra protection it is recommended to polish the Tiles with wax to avoid penetrating stains.

18) Do not use dark color or dyed grouts unless it matches the color of your tile, as they will cause staining specially in light colors, is recommended using un-tinted grouts, on solid color tiles use grout of the similar color. We recommend making a test in a single piece to see the results before applying it to the complete area.

19) Cement tiles are installed edge to edge with a minimal grout line using un-sanded grout to allow expansion, for large grout line use a sanded grout. Recommended grout joint width is 1/16"-1/8". Joints should be full and

free of all voids and pits. Once grout has been applied and starts to dry, remove excess grout immediately. Do not affix duct tape, gaffer tape or acid tapes directly on to cement tiles surface this can cause discoloration or staining.

20) There are different types of sealers that offer different finishes, matte, enhanced and gloss sheen, if you prefer a glossy finish Tiles can be polished with wax, this process must be done by a professional. Never grind or buff Tiles with an abrasive pad or disc, this process will damage the color surface.

21) After cleaning process has been completed and accepted, it is recommended to re-seal the tiles and grout lines for extra protection, especially in water places to avoid any water filtrations and moisture.

MAINTENANCE

22) For ongoing maintenance, clean regularly with a neutral detergent and buff tiles with a soft white pad, we recommend to add a capful of liquid wax to the water for extra protection.

23) Extremely heavy foot traffic or out-door installations may require additional maintenance. A natural patina will occur as the floor is maintained and wears.

24) The use of properly sized walk-off mats at entrances and sweeping or dust mopping is most important to remove abrasive grit that may cause wear.

** If you have any questions, contact Tango Tile before starting installation of your Tiles.