

Tango Tile

California Revival Collection

Designed by Susanne Kibak Redfield

Made in Sisters, Oregon by KIBAK TILE



A Southern California native, Susanne Kibak Redfield grew up in a town rich in the red tile style of Spanish Revival architecture, "I never knew it was in my blood though, until I started a tile factory in the 80's and began hand painting tiles for a living. I still can't get enough of the saturated, vibrant jewel tones."

The California Revival line Susanne has designed for Tango Tile transcends any one architectural type or style, from Modern to Classic they sing where ever they are laid.

Not just for kitchens and baths, these tiles are a complete lifestyle accompaniment, from stair risers, pools, furniture, to entries, garden paths, and fireplaces.

Product Usage and Further Information:

Red Quarry Tile Body

Product Features:

Designed to withstand applications for floor, wall, interior and exterior use. Exterior use, including water features, only in non-freezing zones.

Meets and exceeds all ANSI A137.1 standards.

Description:

8"x 8", 6"x 6", 3" x 6", 4"x 8", 4"x 4".

1/4" thick

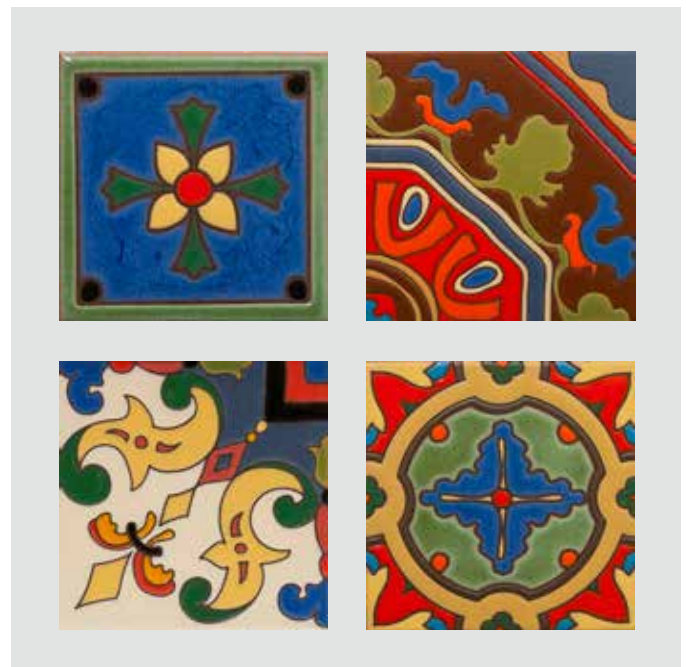
Weight: 3.41 lbs. per sq. ft.

Trims: Options available, see page 9.

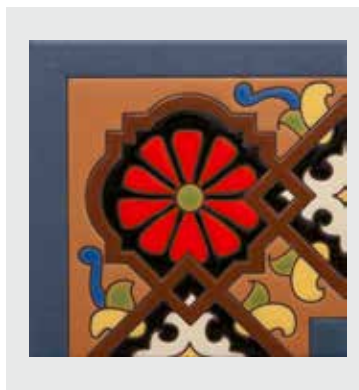
Field Tiles: Options available, see pages 7 & 8.

Murals: Options available, contact Tango Tile.

Typical lead time is 4-7 weeks, please call to verify.

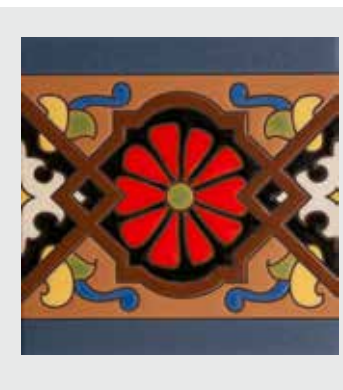


8" x 8" DECORATIVE TILES



DIEGA CORNER, 8" x 8"

Coordinating Field Colors: Black, Wasabi, Woodland, Red, Cosmic, Night Blue, Honey, Ivory, Mahogany.



DIEGA, 8" x 8"

Coordinating Field Colors: Black, Wasabi, Woodland, Red, Cosmic, Night Blue, Honey, Ivory, Mahogany.



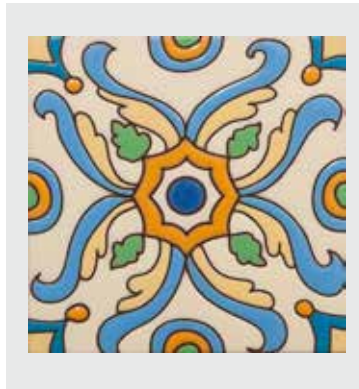
ALBA, 8" x 8"

Coordinating Field Colors: Aquarius, Brick, Night Blue, Wasabi, Wheat, Woodland.



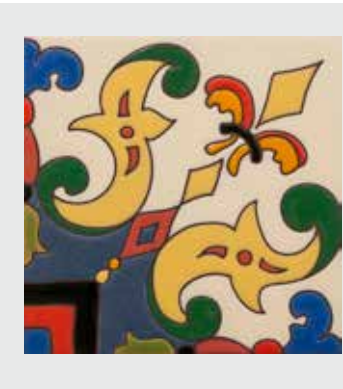
IGNACIO, 8" x 8"

Coordinating Field Colors: Night Blue, Brick, Wasabi, Woodland, Wheat, Cosmic.



ARMENA, 8" x 8"

Coordinating Field Colors: Aquarius, Ivory, Cosmic, Meadow, Wheat.



MARTINEZ, 8" x 8"

Coordinating Field Colors: Cosmic, Ivory, Honey, Black, Night Blue, Wasabi.



FRANCO, 8" x 8"

Coordinating Field Colors: Sebring, Black, Night Blue, Cosmic, Wasabi.



PILAR, 8" x 8"

Coordinating Field Colors: Night Blue, Woodland, Mahogany, Red, Wasabi, Cosmic, Orange, Wheat.

Tango Tile

California Revival Collection

Designed by Susanne Kibak Redfield

Made in Sisters, Oregon by KIBAK TILE



REYA, 8" x 8"
Coordinating Field
Colors: Night blue,
Honey, Cosmic, Red,
Woodland, Wasabi.

6" x 6" DECORATIVE TILES



BELMIRA, 6" x 6"
Coordinating Field
Colors: Wheat, Barn
Red, Black.



INEZ, 6" x 6"
Coordinating Field
Colors: Wheat, Red,
Honey, Night Blue.



ELIAS, 6" x 6"
Coordinating Field
Colors: Black, Sebring,
Wasabi, Charcoal,
Aquarius, Wheat.



DEL REY, 6" x 6"
Coordinating Field
Colors: Orange,
Cosmic, Honey, Red,
Aquarius.



TILCARA, 6" x 6"
Coordinating Field
Colors: Brick, Orange,
Wheat, Black, Red,
Aquarius, Honey.



LAGOS, 6" x 6"
Coordinating Field
Colors: Honey, Black,
Red, Woodland.

4" x 4" DECORATIVE TILES



PAQUITA, 4" x 4"
Coordinating Field
Colors: Red, Night
Blue, Honey, Woodland,
Wasabi.



BELMIRA DROP-IN,
4" x 4"
Coordinating Field
Colors: Barn Red,
Black, Wheat.



ALBA DROP-IN, 4" x 4"
Coordinating Field
Colors: Wheat,
Cosmic, Wasabi, Casa
Terracotta, Night Blue.



TILCARA DROP-IN,
4" x 4"
Coordinating Field
Colors: Red, Honey,
Black, Cosmic.



HERRERA, 4" x 4"
Coordinating Field
Colors: Orange, Honey,
Red, Aquarius, Cosmic.



ARMENA DROP-IN,
4" x 4"
Coordinating Field
Colors: Ivory, Cosmic,
Aquarius, Wheat.



ROMERO, 4" x 4"
Coordinating Field
Colors:
Wasabi, Honey,
Aquarius, Wheat, Black.

DECORATIVE TILE BORDERS

Corner pieces available, please contact Tango Tile



ACOSTA LINER,
2" x 6"
Coordinating Field
Colors: Cosmic, Black,
Ivory.



DARIO BORDER,
3" x 6"
Coordinating Field
Colors: Night Blue,
Honey, Wasabi,
Sebring, Aquarius,
Black.



NEVARRO BORDER,
3" x 6"
Coordinating Field
Colors: Brick,
Woodland, Wasabi,
Night Blue.



TILCARA BORDER,
3" x 6"
Coordinating Field
Colors: Black, Wasabi,
Ivory, Woodland,
Aquarius, Red.



YELINA BORDER,
4" x 8"
Honey, Night Blue,
Woodland, Red,
Cosmic.



DANTE BORDER,
4" x 8"
Honey, Aquarius,
Wasabi, Meadow,
Orange, Red,
Woodland, Mahogany.

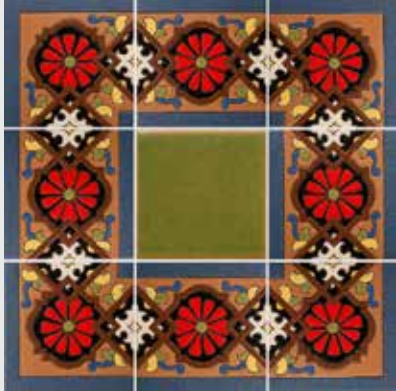


MATIA BORDER,
4" x 8"
Woodland, Honey,
Meadow, Red, Night
Blue.

Tango Tile

California Revival Collection
Designed by Susanne Kibak Redfield
Made in Sisters, Oregon by KIBAK TILE

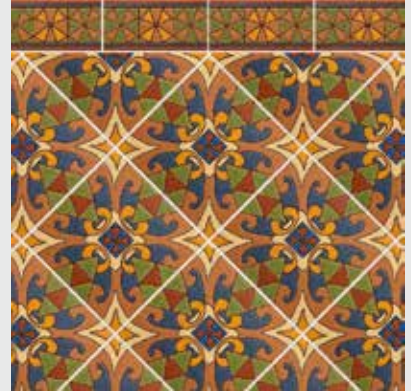
CONCEPT EXAMPLES



Diega 8" x 8" with Diega Corner



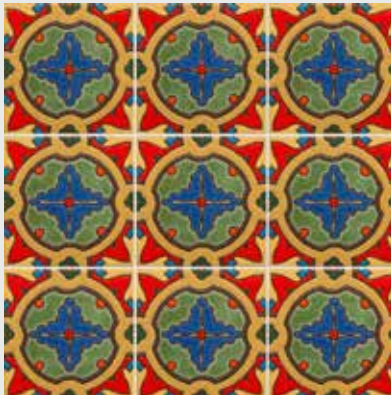
Martinez 8" x 8" with Acosta Liner



Ignacio 8" x 8" with Nevarro Border



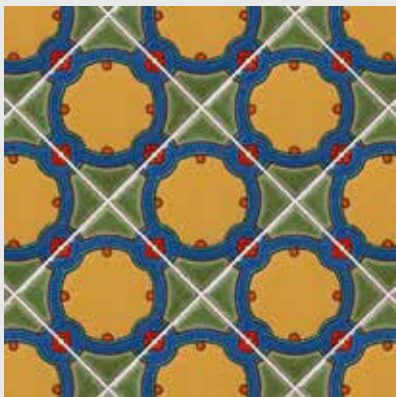
Lagos 6" x 6"



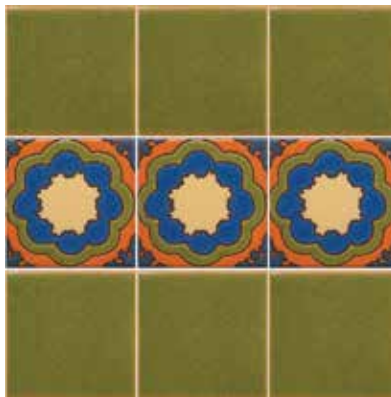
Del Rey 6" x 6"



Belmira 6" x 6"



Herrera 4" x 4"



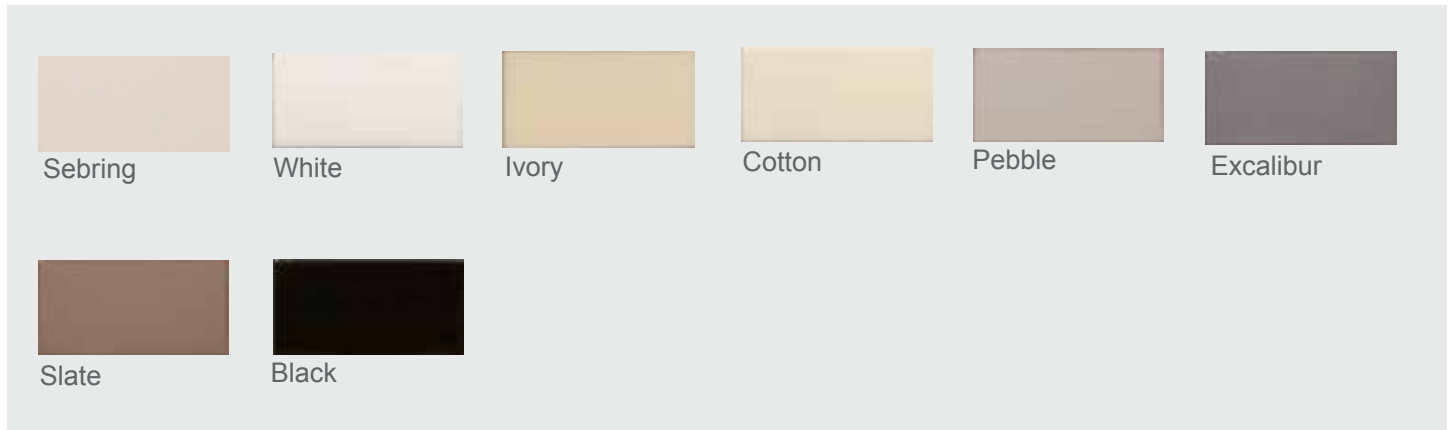
Alba Drop-in 4" x 4"



Paquita 4" x 4"

FIELD TILE COLORS / TRIMS & MOLDING COLORS

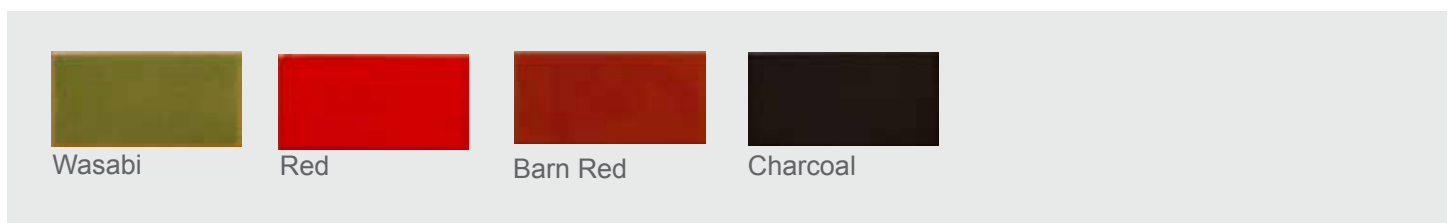
Color Group I



Color Group II



Color Group III

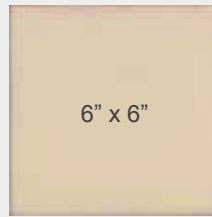


FIELD TILE SIZES



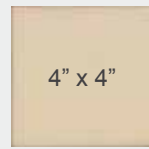
15 pieces / box = 6.67 sq ft
Sold by Box

2.25 tiles = 1 sq ft



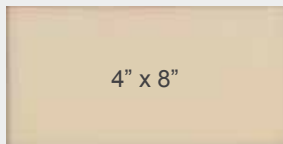
25 pieces / box = 6.25 sq ft
Sold by Box

4 tiles = 1 sq ft



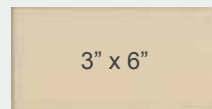
35 pieces / box
= 3.89 sq ft
Sold by Box

9 tiles = 1 sq ft



30 pieces / box = 6.67 sq ft
Sold by Box

4.5 tiles = 1 sq ft



40 pieces / box = 5.00 sq ft
Sold by Box

8 tiles = 1 sq ft

TRIMS & MOLDING

Beak 1" x 6"



Flat Liner 1/4" x 6"



Quarter Round 1" x 6"



Flat Liner 1/2" x 6"



Half Round 1/2" x 6"



Square Style V-Cap 2 1/4" x 6"



Chair Rail Molding 2" x 8"



Chair Rail Molding
Corner 2" x 2"



Hunt V-Cap 2" x 8"



Hunt V-Cap
Corner 2" x 2"

