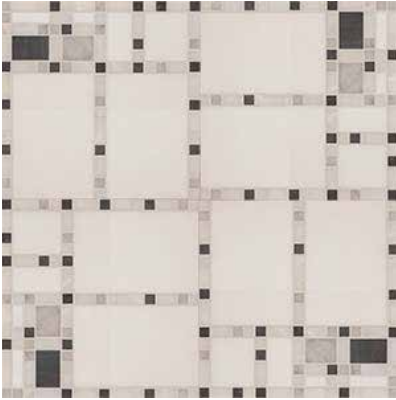


Tango Tile

CALIFORNIA STONE & MOSAIC
Erin Adams Marble Collection



There is man-made artwork and there is natural art work. California Stone and Mosaic takes the best that nature has to offer and combines it in both traditional and contemporary patterns to give Tango's customers the best of both art worlds. The stone is carefully selected and monitored to insure quality standards are met and should stones from one source deteriorate in quality, another source is used or another stone is substituted. Customers will be advised if changes need to be made, and as with all our tiles, sampling is strongly advised.

Erin Adams used music as her muse to design four original marble mosaic patterns for Tango Tile. The two Boogie Woogie series are a riffs on Mondrian's Broadway Boogie Woogie in versatile, neutral colors. New York, New York captures NYC's straightforward approach to being a city with a wonderful grid design and a warm palette. Rhythm looks to us like the pulse of NYC with its vertical and horizontal elements softened by the use of muted colors. All four of these designs can work anywhere in your home and are highly recommended for entry ways, foyers and halls. As with all our collections, we strongly urge you to order a sample before purchasing.

Materials:

Marble from around the world crafted in California.

Product Usage:

Floors, walls, fireplace surrounds, shower and tub surrounds, feature walls, entryways, interiors and exteriors. It is not recommended for exteriors in freezing zones.

Color Palette:

Marbles samples are shown on page 4. Marble is a naturally occurring stone with slight to moderate color and marking variation in each tile. It is these variations which give every marble installation its beautiful uniqueness.

Description:

Sheet sizes vary depending on the pattern but all tiles are sold by the square foot.

3/8" thick

Weight is 4 to 5 ½ pounds per square feet depending on pattern and stones. See specific pattern for more information.

Typical lead time is 2-6 weeks, please call to verify.

Special Orders: All orders are "special". Tango has preselected some wonderful designs and offered them in commonly requested stones, but California Stone and Mosaics welcomes changes. A quotation will be provided upon request.

SAMPLING IS STRONGLY ENCOURAGED

BOOGIE WOOGIE



CLARINET, polished Thassos, Bardiglio, Calacatta Scuro, Carrara.



BASS, honed Jerusalem Gold, Polished Verde Luna, Botticino, Giallo Reale, Rosa Verona.



IVORIES, polished Calacatta Gold, Thassos.



SHARPS AND FLATS, polished Nero Marquina, Thassos.

BOOGIE WOOGIE 2



HORNS, honed Porto Beige, polished Giallo Reale, Verde Luna, Rosa Verona, Crema Marfil.



DRUMS, polished Calacatta Gold, Nero Marquina, Bardiglio, Carrara and honed Bardiglio.



TIMPANI, polished Calacatta Gold, Nero Marquina, Thassos.



SAXOPHONE, polished Carrara, Cherry Blossom, Thassos.

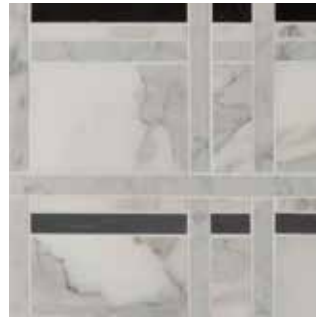
NEW YORK, NEW YORK



MURRAY HILL, honed Jerusalem Gold, polished Afyon Sugar, Emperador Dark, Thassos.



CENTRAL PARK AUTUMN, polished Rosso Verona, Verde Luna, Giallo Reale, Crema Marfil.



SOHO, polished Carrara, Bardiglio, Nero Marquina, Calacatta Gold.



CENTRAL PARK WINTER, polished Snow White, Calacatta Scuro.

RHYTHM II



ALL THAT JAZZ, polished Calacatta Scuro, Thassos.



BACK BEAT, polished Snow White, Thassos.



SYNCOPIATION, honed Jerusalem Gold, polished Crema Marfil.



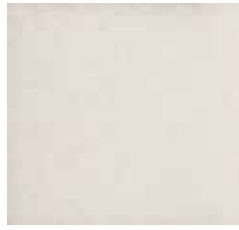
PERCUSSION, polished Ming Green, Carrara.

Tango Tile

CALIFORNIA STONE & MOSAIC Erin Adams Marble Collection



Thassos



Snow White



White Carrara



Calacatta Gold



Calacatta Scuro



Ming Green



Afyon Sugar



Cherry Blossom



Botticino



Porto Beige



Crema Marfil



Jerusalem Gold



Giallo Reale



Rosso Verona



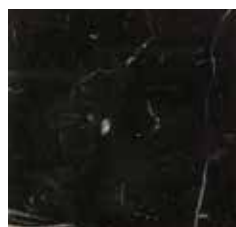
Emperador Dark



Verde Luna



Bardiglio



Nero Marquina

All stones are products of nature. In all natural stone there is variation in color, shading, and markings. These differences are welcomed, and are not to be considered flaws. Each piece has its own characteristics and no two pieces will ever be the same.

The sheets are mesh-backed (not face mount) so waterline application will not have proper adherence and is not recommended.

Natural stone has thickness differences and this should be taken into consideration especially when blending materials.